

PiXL

IGNITING LEADERS
CHANGING LIVES

MAT CONNECT

MEMBERSHIP PLAN
2023/24



Why MAT leaders say **their Trust is part of PiXL**

PiXL

- "PiXL is our chosen vehicle for improving life chances and outcomes – we simply use the parts we want to fit our context."
- "PiXL creates an opportunity to see above and beyond our own setting."
- "Being part of MAT Connect allows us to Work with other MATs and with people in the same roles, which is helpful for our Central Team's development."
- "Having the time to meet with other MAT Teams and share ideas and think through issues energises us."
- "The MAT Conferences create a space where we can showcase what we are doing and hear from other people."
- "Using PiXL across our MAT means we have a common language across the schools, particularly around raising achievement and assessment."
- "We have a Trust Raising Standards Leader who attends all conferences with the RSLs in each school. Meeting together at a conference is really valuable time and gives us much to think about when we return."
- "Using the MAT Connect Platform means we can see how each school is doing and provides a good basis for further conversations."



TIME TO Think

PiXL

It's time to think. You and your leadership is important and PiXL is here to make sure you are not alone.

Join a leadership network of 2500 schools and 40,000 leaders who want to make a difference to the life chances and outcomes of young people. Providing leadership growth, networking, events and evidence-informed strategies and resources, we save you time and enable you to think about the things that matter. With our leadership approaches, associate model and national conferences, we provide opportunities for you to step back and be strategic. Wave goodbye to doing it alone – be part of something special.

UNMISSABLE

- 3 national conferences
- 'Heads Together' solution forums
- Personalised associate visits focusing on your WIG and priorities
- A rapid response to the current educational landscape
- Practical strategies and resources

SHAPING LEADERSHIP

- Making time to think and be strategic
- PiXL Leadership approaches in action
- Equipping Middle/Subject Leaders
- Empowering Trust Teams and SLTs
- Developing talent at all levels of schools
- Creating lasting change

SPEAKING UP ON...

- Improving life chances
- Improving outcomes
- Hard-to-reach students
- Students who are at a disadvantage
- The most able
- SEND (ALN) and Inclusion
- Boys' achievement
- Maths confidence
- The Word Gap

“Our Associate is our key link with PiXL and a key reason we renew year after year. She understands our school well, knows what makes us tick and advises us accordingly. Our Associate is our most valuable PiXL resource!”

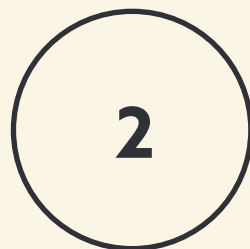
PiXL MEMBER

The 3 principles behind what we do

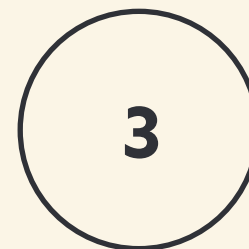
PiXL



Improving life chances and outcomes for young people



Influencing school leadership, regionally and nationally



Helping school leaders be 'agents of change' for their students

With PiXL, you don't just get one thing like conferences or resources, you get it all, an integrated approach from research to implementation and resource, saving time and workload.



NETWORKING

Creating opportunities for Heads, Deputy Heads and Raising Standards Leads (RSLs) to come together, learn and support each other.



GROWTH

Growing leaders is at the heart of PiXL. We provide books, podcasts, book clubs and even a school of leadership to help develop your leaders.



EVENTS

From our national conferences, subject-specific conferences, through to RSL events - we believe in the power of coming together.



STRATEGIES

Diagnostic tools, leadership frameworks and assessment support - PiXL is a treasure trove of resources for all our schools.

In addition to the core offer for your schools, the focus for **MATs in 2023/2024**

PiXL

INCLUDED IN THE MAT OFFER

- Three **MAT conferences**
- **Weekly MAT bulletins** with the latest news and events
- Implementing change through **PiXL bulletins** e.g. Life chances and outcomes
- Scaling Up and Looking Out - **MAT leadership case studies**
- **Central Team places** at all national conferences
- **Ideas from the network** booklets (MAT specific)
- A **MAT Leader calendar**
- **Supporting Middle Leaders/Subject Leaders** across Trusts*
- **Personalised and bespoke support***
- **Supporting you in your Trust conferences***
- Access to **additional experts and services** as a separate agreement*

“An amazing day at the conference, if you are not already part of the family, join now!”

PIXL MEMBER

**The MAT Connect Offer is an additional benefit for eligible Trusts and there is no fee for 2023-2024. However, additional services may be booked by MAT Central teams, including subject leader in-person conferences and our paid-for School of PiXL leadership courses, at the standard fee for these events and courses. In addition, bespoke support for your Trust may be requested, with a fee to be agreed for the appropriate service and subject to availability.*



PRIMARY



PiXL



INCLUDED IN THE PRIMARY OFFER PER SCHOOL REGISTERED

Updated PLCs, Therapies and Tests

New look and updated therapies and tests to support new Personalised Learning Checklists. We have listened to feedback and the therapies are cleaner looking, more interactive and use an I do, We do, You do approach (teach, model, apply).

Handwriting Package

We know from what you have told us that handwriting is a major barrier to many pupils which has been exacerbated by the lockdown. This package will support teachers in identifying pupils' handwriting barriers and support addressing them with practical strategies that can be applied in both whole class settings and targeted intervention. Covering everything from gross and fine motor development to improving legibility, this package will support handwriting development whatever the need.

Mental Agility Tests in Mathematics

We will be building on the highly popular Year 5 and 6 mental agility tests with agility tests in Years 2-6. These oral tests are designed to build pupils' proficiency in the use of mental strategies whilst also supporting teachers in determining which strategies need to be emphasised more through explicit teaching and discourse.

Online Testing

We will be providing online testing as an alternative to the paper versions of our PiXL assessments in Years 3-5 in mathematics and GPS. The online tests will mirror the paper and will include a Question Level Analysis spreadsheet which will automatically populate as pupils answer online. These online tests will reduce teacher workload as well as save on photocopying costs.

Communication and Language in Early Years

We know from research that early language is the most important factor in influencing literacy and numeracy at age 11. We are therefore putting our weight in this area and are delighted to be working with Jean Gross on this project. We will be producing a comprehensive package which will include CPD for teachers, classroom materials and a leadership thinking guide. Although aimed at Early Years, we are confident that the CPD package will be appropriate for all staff.

“PiXL has been a constant, shining light in a time of educational turbulence.”

PiXL MEMBER



SECONDARY

PiXL

INCLUDED IN THE SECONDARY OFFER PER SCHOOL REGISTERED

- An associate to **focus on your Wildly Important Goal** and 2 school priorities, with bespoke and personalised support
- **Feed Forward** – updates on national exam performance and areas of weakness using the examiner reports from 2023 and historic performance from 2019 and 2022
- Updated **Therapies and Checklists** to improve outcomes
- **New 'PiXL Waves'** for English and maths with supporting resource for gaps, powered by Pupil Progress
- A **focus on writing and handwriting** and packages to use
- **Student and staff support materials** for English, maths and science focusing on Grade 5 and 9
- 9 digital **Subject CPD sessions** across the year
- New material on **resilience, motivation and change** for students
- English, maths and science face-to-face **national conferences** in London (additional cost)
- A **Rapid Response team** providing updates, briefings and resource on the most current issues
- **Maths Confidence:** embedding mental agility and financial literacy across the school
- A continued **focus on Reading and the Word Gap** and implementing across the whole school including: fluency, struggling readers and disciplinary literacy
- A Teaching and Learning focus on **questioning, metacognition and adaptive teaching**
- Insights on **Boys, SEND (ALN), More Able and Disadvantaged**, including schools working together on a project and publishing the findings
- **Ideas from the network** booklets e.g. most able, CPD models and appraisal, motivation for exam year groups
- Live sessions on the **Networking App** on the most tricky issues in schools
- A focus on supporting and **equipping Middle Leaders**

“PiXL helps us see the wood from the trees and its great to know there’s always someone on hand to help us stay on the right path.”

PIXL MEMBER



The below bespoke offer is in addition to the full secondary offer.



PiXL

BESPOKE OFFER FOR WALES

All that Secondary Membership offers, PLUS:

- **Networking sessions in Wales, live with the Regional Team**
- **Heads Together sessions in Wales with members of the PiXL Secondary Team**
- **Feed Forward for the WJEC exam series 2023 focusing on English/maths**
- **New 'PiXL Waves' for WJEC and therapies for areas of weakness, powered by Pupil Progress (English, maths and numeracy!)**
- **Ideas from the Network in Wales e.g. exam performance, curriculum planning**
- **Specialist visits on Teaching and Learning approaches**

BESPOKE OFFER FOR NORTHERN IRELAND

All that Secondary Membership offers, PLUS:

- **Networking sessions in Northern Ireland, live with the Regional Team**
- **Heads Together sessions in Northern Ireland with members of the PiXL Secondary Team**
- **Feed Forward for the Northern Ireland exam series 2023 focusing on English/maths**
- **New 'PiXL Waves' for CCEA and therapies for areas of weakness, powered by Pupil Progress**
- **Ideas from the Network in Northern Ireland e.g. exam performance, preparing for English and maths**
- **Specialist visits on Teaching and Learning approaches**

BESPOKE OFFER FOR ALTERNATIVE

A new PiXL-enabled price of £1,625 + VAT with more content! Access to all that is on offer for secondary, PLUS:

- **Access to all 3 Primary National Conferences to equip you for the 'stage not age' approach**
- **NEW breakouts for Alternative at every National Conference**
- **3 live digital sessions bringing the network together and exploring the issues**
- **NEW Handwriting package**
- **NEW Securing capital letters and full stops**
- **NEW Mental agility package with tests**
- **An Alternative maths app**
- **Ideas from the Network: Alternative Education**
- **Access to all of PrimaryWise**

“Thank you so much, it’s been so fantastic! Really grateful for all your help and suggestions. Thanks for taking the time to show us – I’d not realised there was so much support available!” PiXL MEMBER





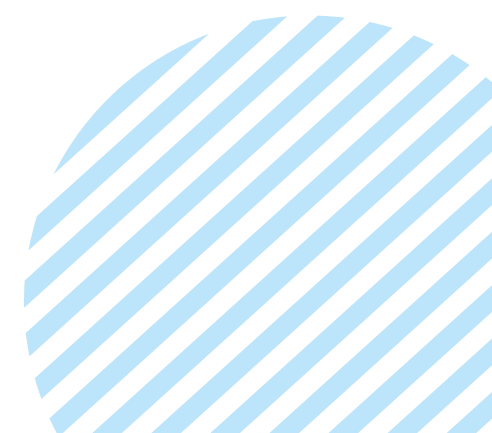
POST 16

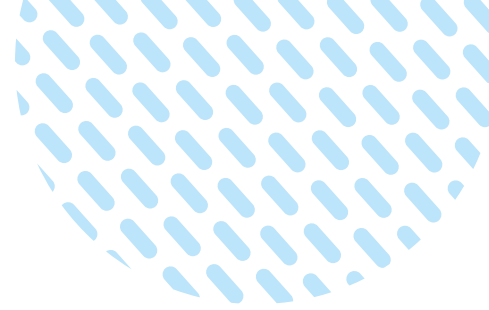
INCLUDED IN THE POST 16 OFFER PER SCHOOL REGISTERED

- An associate to **focus on your Wildly Important Goal** and 2 school priorities, with bespoke and personalised support
- **Feed Forward** – updates on national exam performance and areas of weakness using the examiner reports from 2023 and historic performance from 2019 and 2022
- Updated **Therapies and Checklists** to improve outcomes
- 9 digital **subject CPD sessions**
- A **Post 16 Rapid Response team** to provide you with what you need as issues arise
- **Financial Literacy** for Post 16 students
- A continued focus on **disciplinary literacy, academic reading** and **academic writing**
- **PiXL Futures:** preparing for interviews, applications and independent thinking and living
- A new **Post 16 research team** finding the latest research and providing case studies
- A Teaching and Learning focus on **questioning, metacognition** and **adaptive teaching**
- Insights: **Boys, SEND (ALN), More Able** and **Disadvantaged**
- **Ideas from the Post 16 network** booklets on: Preparing for university/apprenticeships/work, the additional curriculum and tutor programmes

“Being able to work collaboratively with other schools is one of the very best things about being a PiXL school – we are at our best when we work collaboratively, and the PiXL reading hubs will enable us to harness some of the power of this network.”

PIXL MEMBER





PiXL

Become a member, and watch your leaders grow

Eligibility for MAT Connect requires one or more of the following to be true:

- All secondary schools (11-16) are registered with PiXL
- All primary schools are registered with PiXL

Infant fee per school: £2,100 + VAT*

Primary fee per school: £2,700 + VAT*

Secondary fee per school: £3,375 + VAT*

Post 16 fee per school: £3,300 + VAT*

For 2023-2024 MAT Connect members registering or renewing before 31st August 2023:

- A MAT Connect central renewal and invoice for 2023-24 will entitle you to benefit from the lower MAT fee, providing all secondary schools (11-16) or all primary schools are registered with PiXL. This represents a reduction of 7.5% on the total fee for the schools you register.
- If all schools from both sectors, or a minimum of 30 schools in total, are registered with PiXL and you pay via a central invoice, we will apply a further 2.5% discount. The eligibility criteria is based on primary and secondary schools, but the reduction is also applied to fees paid for the post 16 and infant schools you decide to register with PiXL.
- A MAT school fee will be available to any school within a MAT Connect Trust that joins in year (October 1st 2023 – May 1st 2024). This will be at a reduced rate to our standard school fee for the given point of the membership year.

*These figures are based on standard school fees. Other offers may apply. Bespoke information can be found by requesting this via trusts@pixl.org.uk. Membership subscription fees cover the academic year from **1st Sept 2023** to **31st Aug 2024**. All prices stated do not include VAT.

“PiXL have been extremely supportive and understanding and I have always come away from meetings feeling a little taller.”

PIXL MEMBER



PIXL

“The PiXL Network does it again! Yesterday, I was discussing possibly leaving education, but now... I’m feeling so ready to get back to school and make an impact on the people who matter! We are all in this together – today I felt part of a team again! Let’s do this!”

PIXL MEMBER

www.pixl.org.uk

email: membership@pixl.org.uk